

 SILVERSEA®

The background of the entire page is a close-up photograph of two marine iguanas. Their heads are in the foreground, facing each other with their snouts touching. The iguanas have dark, scaly skin with prominent, raised scales on their heads. The background is blurred, showing more of the iguanas and their rocky environment.

# THE ORIGINS OF DISCOVERY

GALÁPAGOS 2022-2024





*Steve McCurry*

Cover picture: Iguanas, Galápagos Islands, Ecuador,  
2019, by Steve McCurry

The Galápagos Islands possess a unique allure. Drawn by an innate sense of curiosity, we arrive, journey through millennia-old landscapes, and leave with a new appreciation for the act of discovery. Darwin's Theory of Evolution is a testament to the beauty of these lands and their endemic inhabitants. How will the Galápagos Islands imprint themselves on you?

---

*“No destination is comparable to the Galápagos.  
From the endemic wildlife to the unique geology,  
these lands have followed a distinct path of evolution”*

BARBARA MUCKERMANN - CHIEF MARKETING OFFICER, SILVERSEA CRUISES































---

*“The Galápagos is one of my favourite places  
in the world. You travel through a living laboratory  
that is seemingly designed for the study of wildlife,  
perhaps unchanged for millions of years.  
The animals are unfazed by the presence of humans.”*

STEVE MCCURRY - PHOTOGRAPHER













---

*“The Galápagos expedition experience is so special. Every single moment that our guests spend ashore and in the water offers a chance to witness the remarkable potential of Mother Nature. We are visitors in this isolated hotspot of natural discovery.”*

CONRAD COMBRINK - SVP EXPEDITIONS  
TURNAROUND OPERATIONS AND DESTINATION MANAGEMENT, SILVERSEA CRUISES















# A WARM WELCOME TO THE GALÁPAGOS

*A pristine sanctuary of discovery*

We would like to welcome you to the magical archipelago of the Galápagos. In the seven years our guests have been discovering these islands, we have developed an intimate understanding of how to form meaningful connections between travellers and the destination. Through our years of sailing the archipelago, we have been privileged to truly understand the soul of the Galápagos Islands, whether it is the endemic wildlife, the rare plant life or the stunning landscape. That's why we have enriched our two itineraries, adding five new destinations and an array of new highlight experiences to our sailings. These destinations have never been visited by Silversea, and will allow guests to immerse themselves in their Galápagos experience even deeper than before. From the islands' volcanic origins to their present-day status as a marine reserve and "living museum," you will see why this wondrous place inspired Darwin's Theory of Evolution after his visit in 1835. You will learn about the incredible diversity of Ecuadorian food and culture, and gain exclusive access to insider knowledge about the islands' ecosystems and how they have evolved into such delicate and magical places. At almost 600 miles (960 km) from the mainland of Ecuador, these volcanic islands are among the hardest places to reach in the world. However, if you are among the few who are so focused on immersive, transformative travel that distance is no object, prepare to be amazed. The 19-island-archipelago was the world's first UNESCO Heritage Site and rightly so. An astonishing 9,000 species of flora and fauna call the archipelago home, many of which are endemic. These include the Galápagos giant tortoise, the Galápagos sea lion and, of course, the charismatic Galápagos Penguin. Additionally, Red- and Blue-footed Boobies, Frigatebirds and Flightless Cormorants are popular sights, along with stealthy marine iguanas, green sea turtles and towering Scalesia trees. If you are looking for a travel experience that makes everything that you have ever seen pale in comparison, then look no further.

---

*It is impossible to be unmoved by the environment: the inquisitive animals, the inspiring feeling of wonder, the very knowledge that you are imbibing the strangest, most wonderful place on Earth.*

---







Bartolome Island, a perfect spot to enjoy the sunset on the Galápagos Islands



# THE GALÁPAGOS AT A GLANCE


*Biological diversity, evolved over time*

Pinta 

FERNANDINA 248 sq mi



A pristine ecosystem, untouched by outside influence. The famous Flightless Cormorants inhabit this island, as do marine iguanas, pelicans, sea lions and fur seals. The active volcano "La Cumbre" forms the island and different types of lava flows can be compared.

Bolivar canal 

Has the highest marine biodiversity of the archipelago. Whales, including orcas, can be seen here from May to December.

ISABELA 1.790 sq mi



The largest island of the archipelago, Isabela has five active volcanoes, including the imposing Volcán Sierra Negra, the second-largest caldera in the world. Cloud forests harbour giant tortoise sub-species and mangrove lagoons offer views of stingrays.

FLOREANA 67 sq mi



The Galápagos' first human settlement was set in Floreana. Post Office Bay is home to a barrel used for letters and news, exchanged between whalers and other boats passing by during XVIII to XIX centuries. Flamingos and green sea turtles nest on the island from December to May.

 1535 FIRST DISCOVERED

The first recorded visit to the islands happened by chance in 1535, when Fray Tomás de Berlanga, the Bishop of Panamá, was surprised with this undiscovered land during a voyage to Peru. The first formal exploration of the islands took place in the XVIII century by the Spaniard Malaspina.

 1978 WORLD HERITAGE

UNESCO recognised the islands as a World Heritage Site and, in 1985, as a biosphere reserve. This was later extended in December 2001 to include the marine reserve.

13 MAIN ISLANDS + 215 ROCKS & ISLETS

The archipelago is located on the Nazca Plate, a tectonic plate which is moving at a rate of about 2.5 inches (6.4 cm) per year. The first islands to form here were the South Plazas, five million years ago.



SANTIAGO 226 sq mi



Marine iguanas, sea lions, fur seals, sea turtles, dolphins and sharks are found here. Darwin's Finches and Galápagos Hawks are usually seen, as well as a colony of Galápagos Penguins. You'll find Santiago Island giant tortoises inland.

Marchena

Genovesa

SANTA CRUZ 381 sq mi



The Charles Darwin Research Station and the headquarters of the Galápagos National Park Service are located here. This is the native ground of the Galápagos' giant tortoises. Guests will visit The Tortoise Ecological Reserve to interact with tortoises in the wild.

Seymour Norte

Baltra

Santa Fe



Home to the Santa Fe land iguana - a species found nowhere else.

SAN CRISTOBAL 215 sq mi



This is the first island in the Galápagos Islands Charles Darwin visited during his voyage on The Beagle. This island hosts Frigatebirds, sea lions, giant tortoises, Blue- and Red-footed Boobies, tropicbirds, marine iguanas, dolphins and Swallow-tailed Gulls.

ESPAÑOLA 23 sq mi



Española is around 3.5 million years old, and the southernmost island in the group. Española has a large number of endemic species, including the Waved Albatrosses, Española Mockingbird, Española lava lizard, and marine iguana.

25 THOUSAND POPULATION

The first human settlement dates from 1832.

1,432 PLANT SPECIES

Due to the particular microclimates and geological make-up of the archipelago, the islands are more like a desert than like a rainforest. There are 600 native species of vascular plants, thirty percent of which are found nowhere else on the planet.

77° SUMMER TEMPERATURES  
Fahrenheit (25° Celsius)

Weather changes as altitude increases in the large islands. Temperature decreases gradually with altitude, while precipitation increases due to the condensation of moisture in clouds on the slopes.



# PROTECTING THE GALÁPAGOS

*Safeguarding the islands for future generations*

As conscientious travellers, we have an obligation to enjoy the Galápagos responsibly. It is important to protect this fragile ecosystem and leave it untouched, while contributing to its preservation. Our guests are increasingly attentive to their environmental impact and share our desire to make our travel as ecologically sound as possible. Silversea's first-ever destination-specific ship, *Silver Origin* has been designed entirely with this unique environment in mind. With state-of-the-art technology and solutions adapted especially for sailing here, *Silver Origin's* footprint is minimal. The ship has a dynamic positioning system, which can keep her stationary without dropping anchor, thus protecting the delicate seabed. And thanks to a new hull design and advanced propulsion

system, *Silver Origin* meets or exceeds the highest standards of energy efficiency. All suites feature a freshwater purification system, which significantly reduces plastic usage. And as education is often cited as the best way to encourage conservation, we created the Silversea Fund for the Galápagos. Dedicated to safeguarding the archipelago through educational projects, the fund is a big part of our commitment to keeping the islands pristine for generations to come. Thanks to this initiative, travellers can continue enjoying the unafraid heroes of the islands. Viewing species such as the lumbering giant tortoise, the prehistoric marine iguana and, of course, the flamboyant Blue-footed Booby in their natural habitats is an unforgettable experience.



Pacific green turtle, seen while snorkelling in the Galápagos



Galápagos Blue-footed boobies.



---

*“The Silversea Fund for the Galápagos is a natural extension of our belief that sustainable travel can open eyes and foster respect for our planet, particularly for such unique and diverse destinations as the Galápagos.”*

FERNANDO DELGADO - VICE PRESIDENT AND GENERAL MANAGER OF SILVERSEA CRUISES ECUADOR

---



Bartolome Island, Galápagos Islands. Ecuador



# BASECAMP: A HUB OF DISCOVERY

*Connecting travellers with the destination*

*Silver Origin's* hub of discovery, the heart of the ship, Basecamp is where you will prepare for your excursions, relax after returning, or just meet and socialise with your fellow travellers. The elegant lounge has been considered with guests' social interaction in mind, and is among *Silver Origin's* most innovative spaces. Having been specially designed to offer guests a chance to prepare for their next adventure, Basecamp connects to the ship's Zodiac embarkation area—the Marina—and is the perfect meeting point for Zodiac excursions. The flow of incoming and outgoing guests, along with the excitement that is endemic to any Galápagos cruise, truly represents the synergy between destination and ship.

Basecamp is also where guests can interact with educational activities and the onboard Expedition Team. These enthusiastic and educated individuals—more per guest than any ship in the region—are on hand to deepen your knowledge on

the rare wildlife, amazing landscapes and captivating history of the Galápagos Islands. This means that your individual understanding of the flora and fauna of the archipelago is far richer and far more informed when experiencing the islands first-hand.

The jewel in the crown of Basecamp is surely the large, interactive digital wall, controlled by a central podium—through which guests can access destination-related content. The programme is tailored according to your itinerary and offers access to informative material, including historical pictures provided by the Royal Geographical Society of London, videos with exclusive aerial and underwater shots, excursion previews and scientific presentations. Elsewhere, Basecamp's fascinating artworks and historical artefacts will enrich your understanding of the Galápagos Islands' history.





---

*Basecamp's interactive LED wall not only features bespoke, state-of-the-art software created for Silver Origin but is also the largest of its kind aboard any ship exploring the Galápagos Islands.*

---





# YOUR IMMERSIVE EXPEDITION

*Travel deeper into the Galápagos*

## OUR EXPERTS ENRICH THE EXPERIENCE

Work your curiosity with a Galápagos cruise. Discover the most fascinating aspects of the region in advanced lectures and one-on-one discussions, from being introduced to Blue-footed Boobies and endemic species to learning about the work of Charles Darwin. Accompanying your in-depth exploration will be a hand-picked team of experts to enrich your voyage—all certified by the Galápagos National Park and permanent residents of the islands—forming the highest ratio of qualified guides-to-guests in the archipelago (1:10). Venture ashore on the largest fleet of Zodiacs in the Galápagos, accompanied by the same team of experts—10 naturalists and a photographer. What's more, we'll make it easy for you - with complimentary usage of wetsuits and snorkelling equipment and a complementary backpack and water bottle, so you can be the envy of your friends back home. As if that wasn't enough, it's all included, so you won't ever miss a thing.

---

*“Passionate, knowledgeable,  
and approachable, our expert naturalists  
take great delight in sharing their home  
with curious travellers.”*

CONRAD COMBRINK - SVP EXPEDITIONS, TURNAROUND OPERATIONS  
AND DESTINATION MANAGEMENT, SILVERSEA CRUISES

---







A Zodiac in Bahía Elizabeth, Isabela Island, Galápagos

### ZODIAC® CRUISING

*Silver Origin* has the highest Zodiac-to-guest ratio in the archipelago (1:12.5), meaning you will have more opportunities to explore the islands. Accompanied by our expert naturalists, you will enjoy immersive Zodiac tours to discover the remarkable ecosystems of each island—both on the water and venturing ashore. Thanks to the Zodiacs' versatility, you are sure to get close to the action.



Bartolomé Island, Galápagos

### GROUP HIKES

Your most remarkable memories from the Galápagos Islands will likely come from a simple hike through these vibrant lands, which teem with endemic flora and fauna species. Look to the skies to see Blue- and Red-footed Boobies, Galápagos Hawks, and Darwin's Finches; navigate ancient lava fields on Isabela Island; and ask your accompanying expert for information on Charles Darwin, who walked these lands before you.



Kayaking in Bahía Gardner, Española Island, Galápagos

### ACTIVE KAYAKING

With our naturalists on hand to point out interesting spectacles, you'll take to the water to form an even closer bond with Mother Nature. Kayak around Darwin's Bay and admire Genovesa Island's craggy landscape. Keep your eyes on the water for signs of wildlife; they're sure to abound. Galápagos Penguins, marine turtles and playful sea lions inhabit the Galápagos' waters, as well as an abundance of tropical fish species.



Expedition team lecture

### ADVANCED LECTURES

Travelling to the Galápagos Islands is an exercise in self-enrichment. You'll learn new things about fascinating topics, from geology to history. Prepare for your onshore excursions with the best of the best, as our expert naturalists provide you with inside information in advanced lectures. *Silver Origin's* Basecamp and Explorer Lounge provide the perfect spaces in which to learn new things.





Blue footed booby sitting in front of blowhole at Punta Suarez, Española Island, Galápagos





## ITINERARIES

Silversea operates two brand new itineraries throughout the Galápagos, each of which is designed to incorporate the region's most remarkable experiences.



# WESTERN ITINERARY

## CONNECT WITH RARE WILDLIFE

This new and improved Galápagos itinerary will immerse you in nature's most spectacular wonders, unlocking the beauty of the flora and fauna in the islands that time forgot. Swim with sea turtles in Fernandina and Galápagos Penguins in Isabela. Explore the 'bird island' of Genovesa and Española, as well as our new call in Santa Fe. Walk across otherworldly lava fields and learn about the islands' history before and after Darwin made them famous.

## YOUR ALL-INCLUSIVE VACATION PACKAGE



Guests kayaking in Bahía Gardner, Española Island, Galápagos

## ALL INCLUSIVE PACKAGE OVERVIEW

- Included air\*\*
- Roundtrip flights between Ecuador and Galápagos
- Transfers
- Luggage handling
- Pre-cruise hotel in Quito (2 nights)
- Post-cruise day-use hotel room\*\*\*
- "Quito by night" tour
- National Park fees

\*\*AIR NOT AVAILABLE IN SOME COUNTRIES IN EUROPE, ASIA AND LATIN AMERICA. IN THESE MARKETS, WE OFFER AN AIR CREDIT, INSTEAD, TO BE APPLIED TO THE BOOKING.  
\*\*\*IN GUAYAQUIL FOR GUESTS WITH FLIGHTS AFTER 10PM.



**SAN CRISTOBAL  
TO SAN CRISTOBAL**

Duration **7 Days**

*Silver Origin*



**DAY BY DAY**

DATE	PORT	
18 Jun 2022	SAN CRISTOBAL, GALAPAGOS	AM
18 Jun 2022	KICKER ROCK	PM
19 Jun 2022	ISLA BARTOLOMÉ	AM
19 Jun 2022	BUCCANEER COVE, SANTIAGO	PM
20 Jun 2022	PUNTA VICENTE ROCA, ISABELA	AM
20 Jun 2022	PUNTA ESPINOZA, FERNANDINA	PM
21 Jun 2022	TAGUS COVE, ISABELA	AM
21 Jun 2022	ELIZABETH BAY, ISABELA	PM
22 Jun 2022	POST OFFICE BAY, FLOREANA	AM
22 Jun 2022	CHAMPION ISLET, FLOREANA	AM
22 Jun 2022	PUNTA CORMORANT, FLOREANA	PM
23 Jun 2022	SANTA CRUZ HIGHLANDS	AM
23 Jun 2022	BREEDING CENTER, PTO AYORA, SANTA CRUZ	PM
24 Jun 2022	CERRO DRAGÓN, SANTA CRUZ	AM
24 Jun 2022	GUY FAWKES	AM
24 Jun 2022	BAHÍA BORRERO, SANTA CRUZ	PM
25 Jun 2022	SAN CRISTOBAL, GALAPAGOS	AM



Albatross in Española Island, Galápagos

OTHER DEPARTURE DATES

<b>04 Jun 2022</b>	<b>16 Jul 2022</b>	<b>27 Aug 2022</b>	<b>08 Oct 2022</b>	<b>19 Nov 2022</b>	<b>28 Jan 2023</b>
<b>18 Jun 2022</b>	<b>30 Jul 2022</b>	<b>10 Sep 2022</b>	<b>22 Oct 2022</b>	<b>03 Dec 2022</b>	<b>11 Feb 2023</b>
<b>02 Jul 2022</b>	<b>13 Aug 2022</b>	<b>24 Sep 2022</b>	<b>05 Nov 2022</b>	<b>14 Jan 2023</b>	<b>25 Feb 2023</b>

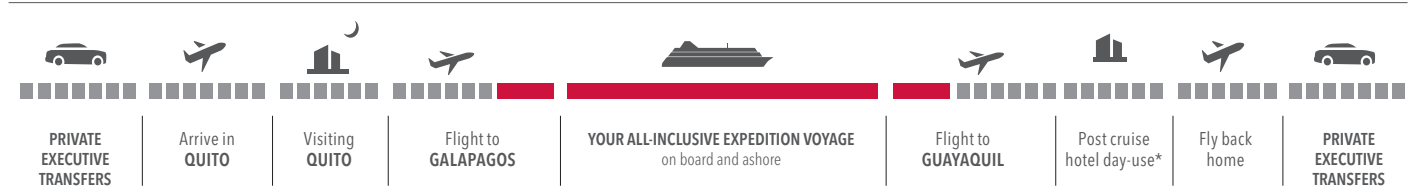


# NORTHERN ITINERARY

## EXPLORE ICONIC ISLANDS

A newly enriched itinerary awaits you from Baltra to San Cristobal. As well as Santa Cruz and Santiago, you'll journey to the four iconic islands of Isabela, Fernandina, Floreana and Bartolome. The hand-picked mix of islands will allow for superb wildlife spotting including the iconic Galápagos Penguin and other fascinating bird species. A relaxing day exploring the white coralline beach of Bahía Borrero (used as a nesting site by green sea turtles) finishes your trip.

## YOUR ALL-INCLUSIVE VACATION PACKAGE



\*For guests with flights after 10pm



A Land iguana in North Seymour, Galápagos

## ALL INCLUSIVE PACKAGE OVERVIEW

- Included air\*\*
- Roundtrip flights between Ecuador and Galápagos
- Transfers
- Luggage handling
- Pre-cruise hotel in Quito (2 nights)
- Post-cruise day-use hotel room\*\*\*
- "Quito by night" tour
- National Park fees

\*\*AIR NOT AVAILABLE IN SOME COUNTRIES IN EUROPE, ASIA AND LATIN AMERICA. IN THESE MARKETS, WE OFFER AN AIR CREDIT, INSTEAD, TO BE APPLIED TO THE BOOKING.

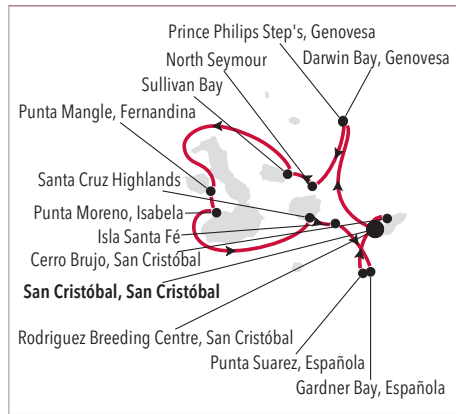
\*\*\*IN GUAYAQUIL FOR GUESTS WITH FLIGHTS AFTER 10PM.



**SAN CRISTOBAL  
TO SAN CRISTOBAL**

Duration **7 Days**

*Silver Origin*



**DAY BY DAY**

DATE	PORT	
25 Jun 2022	SAN CRISTOBAL, GALAPAGOS	AM
26 Jun 2022	PRINCE PHILIP'S STEPS, GENOVESA	PM
26 Jun 2022	DARWIN BAY, GENOVESA	AM
27 Jun 2022	NORTH SEYMOUR	PM
27 Jun 2022	SULLIVAN BAY, SANTIAGO	AM
28 Jun 2022	PUNTA MANGLE, FERNANDINA	PM
28 Jun 2022	PUNTA MORENO, ISABELA	AM
29 Jun 2022	SANTA CRUZ HIGHLANDS	PM
29 Jun 2022	SANTA FÉ	AM
30 Jun 2022	GARDNER BAY, ESPAÑOLA	PM
30 Jun 2022	PUNTA SUAREZ, ESPAÑOLA	AM
01 Jul 2022	BREEDING CENTER, SAN CRISTÓBAL	PM
01 Jul 2022	CERRO BRUJO, SAN CRISTÓBAL	AM
02 Jul 2022	SAN CRISTOBAL, GALAPAGOS	PM
08 Apr 2023	SAN CRISTOBAL	AM



Flightless cormorants, Fernandina island, Galápagos

OTHER DEPARTURE DATES

<b>11 Jun 2022</b>	<b>06 Aug 2022</b>	<b>01 Oct 2022</b>	<b>26 Nov 2022</b>	<b>04 Feb 2023</b>
<b>25 Jun 2022</b>	<b>20 Aug 2022</b>	<b>15 Oct 2022</b>	<b>10 Dec 2022</b>	<b>18 Feb 2023</b>
<b>09 Jul 2022</b>	<b>03 Sep 2022</b>	<b>29 Oct 2022</b>	<b>07 Jan 2023</b>	<b>04 Mar 2023</b>
<b>23 Jul 2022</b>	<b>17 Sep 2022</b>	<b>12 Nov 2022</b>	<b>21 Jan 2023</b>	<b>18 Mar 2023</b>





The Galápagos Blue Footed Boobies





# HOLIDAY CRUISES TO THE GALÁPAGOS

*Board Silver Origin and celebrate in style*

## SPEND THE HOLIDAYS WITH LIKE-MINDED TRAVELLERS

Spend the holidays among the many endemic and endangered species of the Galápagos this year. Some of the most bio-diverse places on the planet, the islands are an otherworldly haven for nature lovers and historians alike. Whether you want to say goodbye to the end of the year or welcome a new one, make sure you do it aboard *Silver Origin*, the most elegant ship in the archipelago.

**18 DEC 2021**

*Christmas holiday*

Duration **11** Days

---

**29 DEC 2021**

*New Year holiday*

Duration **10** Days

---

**17 DEC 2022**

*Christmas holiday*

Duration **11** Days

---

**28 DEC 2022**

*New Year holiday*

Duration **10** Days





Macho Picchu, Unesco World Heritage site, Peru





# MYSTERY & WONDERMENT AT MACHU PICCHU

*Add a pre- and post-voyage Incan adventure*

## **MACHU PICCHU & SACRED VALLEY**

*5-Night from Lima*

Board the legendary 'Hiram Bingham' train to Machu Picchu and stay at the famed Sanctuary Lodge.

## **DEVIL'S NOSE & ANDEAN ADVENTURE**

*5-Night from Quito*

Ride a train around the world's highest active volcano, discover Cuenca's cityscapes and the vast El Cajas National Park.

## **MACHU PICCHU & SPIRIT OF THE WATER**

*6-Night from Baltra or San Cristobal/Lima*

Explore the 'Lost City of the Incas' – plus the highest elevated lake in the world, Lake Titicaca.



# ALWAYS FIRST CLASS



We're committed to making your time with us in the Galápagos unforgettable. While the Galápagos Archipelago is incredibly remote, our new *Silver Origin*—complete with our trademark quality of service—enables you to enjoy the region's spellbinding beauty in absolute comfort and elegance.

## **SMALL-SHIP INTIMACY**

Big on creature comforts and luxuries, our intimate all-suite *Silver Origin* feels personal and convivial. Accommodating just 100 guests, *Silver Origin* has been designed especially with the Galápagos Islands in mind. You'll meet other curious travellers as you form meaningful connections with this unique destination, while dining on fine Ecuadorian and international cuisine.

## **SUPERIOR SERVICE**

With nearly a crewmember for every guest, our personalised service is unparalleled. You'll be catered for and pampered each and every day, as our crew learns to anticipate your needs. Every Silversea suite features a butler, so after a

day spent exploring the archipelago, you just might find a cool cocktail or your favourite snacks waiting for you back in your suite. All our team members take pride in making your time with us the best it can possibly be.

## **GOURMET EXCELLENCE**

Our fine cuisine has always been a jewel in our crown. Aboard *Silver Origin*, you will benefit from a uniquely immersive culinary philosophy, centered upon regionally-grown ingredients, Ecuadorian cuisine, and a farm-to-table approach. Rest assured, you'll still be able to enjoy the international fare that discerns our culinary offering, with the finest ingredients available.

## **SILVERSEA'S 900+ DESTINATIONS**

From the Galápagos on the equator to both Polar Regions and over 900 destinations in between, we strive to create the best, most unique itineraries in the world. We visit every single continent with a huge range of experiences to discover, from iconic world cities to remote islands. Discover what makes each one special.





Explorer Lounge, *Silver Origin*





# SILVER ORIGIN: THE MOST ELEGANT SHIP IN THE GALÁPAGOS



## THE SUITE EXPERIENCE

- All-suite accommodation with private veranda
- Pillow menu and local amenities in every suite
- Butler service for every suite
- Stunning views thanks to dramatic floor-to ceiling windows, the innovative Horizon Balcony and ocean-view bathroom features, in selected categories

## THE ONBOARD EXPERIENCE

- All-inclusive beverages throughout the ship, including select wines, premium spirits and more
- Gourmet dining in two full-capacity restaurants, for both indoor and outdoor culinary experiences
- Authentic Ecuadorian culinary experience, with the freshest local ingredients and top Ecuadorian chefs
- 24-hour room service and in-suite dining
- Personalized service with the highest crew-to-guest ratio in the Galápagos Islands (1:1.11)

## DESIGNED WITH THE ENVIRONMENT IN MIND

- State-of-the-art technology designed specifically for the Galápagos Islands
- A dynamic positioning system automatically keeps the ship stationary to protect the seabed
- Fresh water purification system and eco-friendly water bottles in every suite
- Advanced Waste Water Treatment System





Observation Lounge, *Silver Origin*



Grand Suite, *Silver Origin*



Base camp, *Silver Origin*





DECK PLANS







# SILVER ORIGIN

## SHIP SPECIFICATIONS

Crew	90
Officers	Ecuadorian
Guests	100
Tonnage	5,800
Length	331.4 Feet/101 Mt
Width	52.5 Feet/16 Mt
Speed	14 Knots
Launching	2020



## DECK 08

Stargazing

## DECK 07

The Grill  
Observation Lounge  
Open Deck

## DECK 06

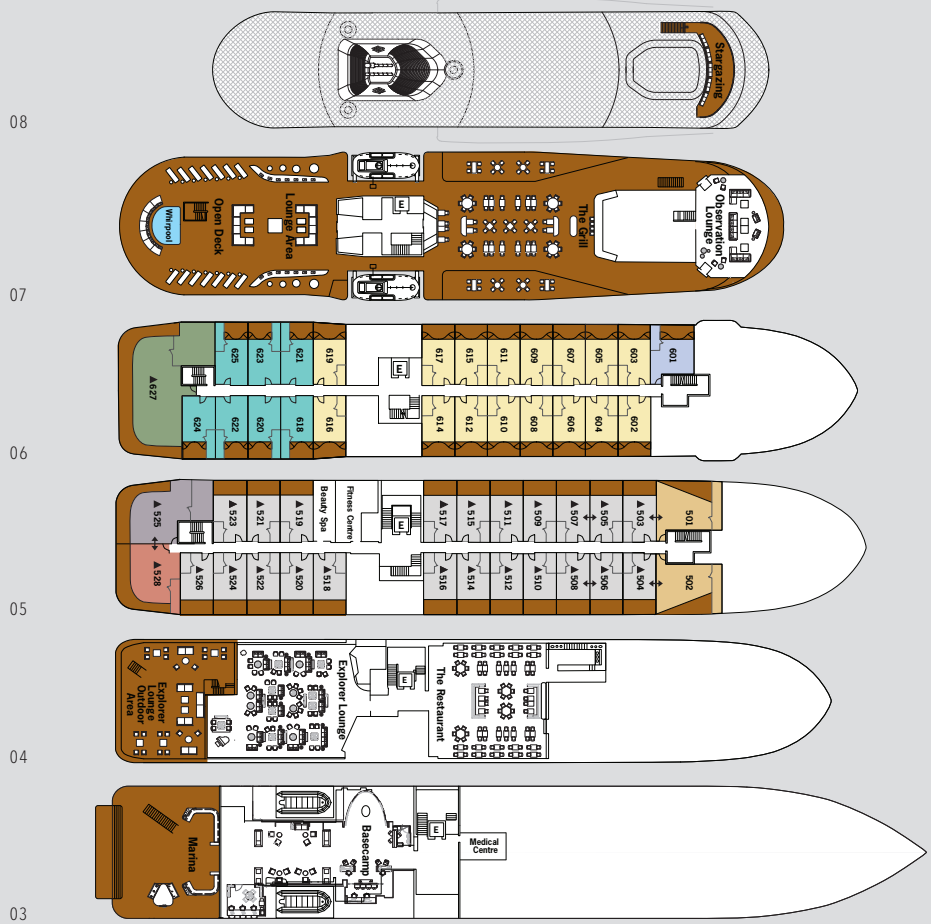
Beauty Spa  
Fitness Centre

## DECK 04

The Restaurant  
Explorer Lounge

## DECK 03

Medical Centre  
Basecamp  
Marina

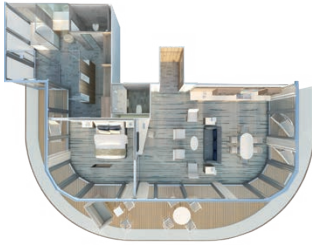


## SUITE CATEGORIES

- Owner's Suite
- Grand Suite
- Royal Suite
- Silver Suite
- Medallion Suite
- Deluxe Veranda Suite
- Superior Veranda Suite
- Classic Veranda Suite







## OWNER'S SUITE

1,722 SQ. FT. / 160 M<sup>2</sup>  
INCLUDING VERANDA (646 SQ. FT. / 60 M<sup>2</sup>)

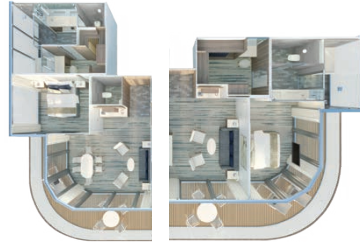
- Large veranda with patio furniture and floor-to-ceiling glass doors
- Living room with sitting area
- Separate dining area
- Twin beds or king-sized bed
- A choice of pillows
- Bathroom with double vanity, plus a powder room
- Ocean-view whirlpool bath and separate shower
- Walk-in wardrobe(s) with personal safe
- Vanity table(s)
- Writing desk(s)
- 2 large flat screen TVs
- Premium sound system
- Premium coffee station
- Binoculars
- Laundry service\*
- Unlimited Premium Wifi



## DELUXE VERANDA SUITE

335 SQ. FT. / 31 M<sup>2</sup>  
INCLUDING HORIZON BALCONY (62 SQ. FT. / 6 M<sup>2</sup>)

- Private veranda with Horizon Balcony
- Sitting area
- Twin beds or queen-sized bed
- A choice of pillows
- Bathroom with large vanity
- Ocean-view walk-in shower
- Walk-in wardrobe(s) with personal safe
- Writing desk
- 1 large flat screen TV
- Unlimited Standard Wifi



Grand Suite

Royal Suite

## GRAND SUITE / ROYAL SUITE

Suites 525 and 528 are connected through a shared foyer

**GRAND SUITE:** 1,025 SQ. FT. / 95 M<sup>2</sup>  
INCLUDING VERANDA (271 SQ. FT. / 25 M<sup>2</sup>)  
**ROYAL SUITE:** 897 SQ. FT. / 83 M<sup>2</sup>  
INCLUDING VERANDA (305 SQ. FT. / 28 M<sup>2</sup>)

- Large veranda with patio furniture and floor-to-ceiling glass doors
- Living room with sitting area
- Separate dining area (Only for Grand Suite)
- Twin beds or king-sized bed
- A choice of pillows
- Bathroom with double vanity, plus a powder room
- Ocean-view whirlpool bath and separate shower
- Walk-in wardrobe(s) with personal safe
- Vanity table(s)
- 2 large flat screen TVs
- Premium sound system
- Premium coffee station
- Binoculars
- Laundry service\*
- Unlimited Premium Wifi



## SUPERIOR VERANDA SUITE

325 SQ. FT. / 30 M<sup>2</sup>  
INCLUDING HORIZON BALCONY (72 SQ. FT. / 7 M<sup>2</sup>)

- Private veranda with Horizon Balcony
- Sitting area
- Twin beds or queen-sized bed
- A choice of pillows
- Bathroom with large vanity and walk-in shower
- Walk-in wardrobe(s) with personal safe
- Writing desk
- 1 large flat screen TV
- Unlimited Standard Wifi



## SILVER SUITE

536 SQ. FT. / 50 M<sup>2</sup>  
INCLUDING VERANDA (109 SQ. FT. / 10 M<sup>2</sup>)

- Large veranda with patio furniture and floor-to-ceiling glass doors
- Living room with sitting area
- Twin beds or queen-sized bed
- A choice of pillows
- Bathroom with large vanity
- Whirlpool bath and separate shower with exterior view
- Walk-in wardrobe(s) with personal safe
- Vanity table(s)
- 2 large flat screen TVs
- Premium sound system
- Premium coffee station
- Binoculars
- Laundry service\*
- Unlimited Premium Wifi



## CLASSIC VERANDA SUITE

325 SQ. FT. / 30 M<sup>2</sup>  
INCLUDING VERANDA (72 SQ. FT. / 7 M<sup>2</sup>)

- Floor-to-ceiling sliding doors with veranda
- Sitting area
- Twin beds or queen-sized bed
- A choice of pillows
- Bathroom with large vanity and walk-in shower
- Walk-in wardrobe(s) with personal safe
- Writing desk
- 1 large flat screen TV
- Unlimited Standard Wifi



## MEDALLION SUITE

355 SQ. FT. / 33 M<sup>2</sup>  
INCLUDING HORIZON BALCONY (88 SQ. FT. / 8 M<sup>2</sup>)

- Private veranda with Horizon Balcony
- Sitting area
- Twin beds or king-sized bed
- A choice of pillows
- Bathroom with large vanity
- Ocean-view walk-in shower
- Fitted wardrobe with personal safe
- Writing desk
- 1 large flat screen TV
- Premium sound system
- Premium coffee station
- Binoculars
- Laundry service\*
- Unlimited Premium Wifi

## AMENITIES & FEATURES FOR ALL SUITES

- Butler service
- Private Veranda
- Mini-bar with local snacks and a range of soft and alcoholic drinks
- In-suite fresh water purification systems and refill stations
- A choice of pillows
- Eco-friendly bath amenities
- Plush robes and slippers
- Hair dryer
- Flat-screen television(s) with Interactive Media Library
- 110/220 volt and USB outlets
- Direct-dial telephone(s)
- 24-hour room service and in-suite dining
- Complimentary Wi-Fi for all suites
- Complimentary expedition gear (waterproof backpack, raincoat and premium metallic water bottle)

\*Complimentary laundry service will be limited to 3 pieces per guest per day.

Suite diagrams shown are for illustration purposes only and may vary from actual square footage. Please refer to suite specifications for square footage.



## IMAGE CAPTIONS

**PAG 2-3** Fur sea lions, Galápagos Islands, Ecuador, 2017, by Steve McCurry

**PAG 4** Rabida Island, Galápagos

**PAG 5** Cruising on a Zodiac in Sullivan Bay, Santiago Island, Galápagos

**PAG 6-7** Snorkeling in Punta Espinoza, Galápagos

**PAG 8** Giant tortoise, Galápagos Islands, Ecuador, 2017, by Steve McCurry

**PAG 10-11** Sally lightfoot crab, Galápagos Islands, Ecuador, 2019, by Steve McCurry

**PAG 12** Santiago Island, Galápagos

**PAG 13** Blue-footed booby, Galápagos Islands, Ecuador, 2017, by Steve McCurry

**PAG 14-15** Desert-like landscape, Galápagos Islands, Ecuador, 2017, by Steve McCurry

### DOOR-TO-DOOR ALL-INCLUSIVE FARE

From international flights and all airport/hotel/ship transfers, including new private executive transfers from home, to pre- and post-cruise hotel nights, shore excursions and more, this truly "door to door" option ensures seamless travels and complete peace of mind knowing that you are in Silversea's care every moment of your journey.

### PORT-TO-PORT ALL-INCLUSIVE FARE

Save up to 25-35% vs. our Door-to-Door fares, without air. The Port-to-Port fare option is appealing to those who prefer to make their pre- and post-cruise travel arrangements independently. Featured on selected voyages which renew quarterly, these fares offer flexibility without sacrificing luxury, as you'll enjoy all of Silversea's inclusive amenities and services once onboard. The Port-to-Port All-Inclusive Fare features a non-refundable deposit.

### FARE GUARANTEE POLICY

Our Fare Guarantee Policy provides you with the peace of mind in knowing that when you plan ahead and book early our Door-to-Door All-Inclusive Fares, not only will you be able to reserve your desired suite, but you can also benefit from any future fare reduction for your voyage, upon request.

### ONBOARD SAVINGS

Book your next voyage while you are sailing and save an extra 5% on selected Door-to-Door All-Inclusive fares or 2.5% on our Port-to-Port All-Inclusive fares. Offer available on selected voyages.

### EXTEND YOUR VOYAGE SAVINGS

Combine two or more consecutive voyages and enjoy up to 5% additional savings. Our combination voyages already include the 5% additional savings.

### SOLO TRAVELLERS

Special single fares are available on selected voyages at only 25% above the double occupancy fare, on lower suite categories.



## VENETIAN SOCIETY LOYALTY PROGRAMME

### MEMBERSHIP PRIVILEGES

- Onboard recognition and invitations to private events
- An additional 5% off on selected sailings
- Ship visitation privileges

### MILESTONE REWARDS

- 100 DAYS: 5% savings on future sailings
- 250 DAYS: 10% savings on future sailings
- 350 DAYS: complimentary 7-day voyage
- 500 DAYS: complimentary 14-day voyage
- 500-day milestone, complimentary 7-day voyage for each 150 days sailed

*All of the above milestones include complimentary laundry service (excludes dry cleaning and "press only"). "Venetian Sailings" 5% and milestones 5% and 10% reward combinable only with "Door-to-Door All-Inclusive fares".*



**NOTICE:** For U.S. cruises and guests: Prior to booking, please consult all applicable U.S. Centers for Disease Control travel advisories, warnings, or recommendations relating to cruise travel, available at <http://www.cdc.gov/travel/notices>. If a certain threshold level of COVID-19 is detected onboard your cruise ship during your voyage, your voyage will be ended immediately and the ship will return to the port of embarkation, and your subsequent travel, including your return home, may be restricted or delayed. For cruises and guests worldwide Health and safety protocols, guest conduct rules, and regional travel restrictions vary by ship and destination, and are subject to change without notice. Due to evolving health protocols, imagery and messaging may not accurately reflect onboard and destination experiences, offerings, features, or itineraries. These may not be available during your voyage, may vary by ship and destination, and may be subject to change without notice.

Visit [silversea.com/terms-and-conditions](http://silversea.com/terms-and-conditions) for the full Terms and Conditions or contact our Reservation Team or your Travel Agent





BOOK YOUR SILVERSEA VOYAGE TODAY.  
CALL SILVERSEA OR CONTACT YOUR TRAVEL PROFESSIONAL.